

# CHILEAN NEWS

Organ of "The Anglo-Chilean Society"

26th Year, No.293

London

March, 1968

3 Hamilton Place, W.1.

## PHOTOGRAPHIC EXHIBITION "AN IMAGE OF CHILE" AT ROYAL FESTIVAL HALL

**A**N EXHIBITION OF PHOTOGRAPHS - "AN IMAGE OF CHILE" sponsored by the Chilean Ambassador, will take place at the Ceremonial Foyer of the Royal Festival Hall, London, S. E. 1. during the period from 8th to 24th April next - Monday to Friday - from 1 p. m. to 5.30 p. m. (with the exception of Good Friday and Easter Monday.) Admittance will be free.

This will be the first time that Chile has held such an exhibition in London and the photographs on show cover a very wide range of activities and give a vivid and ample picture of the country. Members of the Anglo-Chilean Society, together with their relatives and friends, are cordially invited to visit this interesting collection of large photographs.

The exhibition is roughly divided into three sections:

1.

**NORTHERN CHILE** from the port of Arica through the Atacama desert, the pre Columbian ruins of a town, the mountain and valley scenery in Tarapacá, through the nitrate fields at María Elena and copper mines at Chuquicamata, taking a look on the way at religious dances in La Tirana and Andacollo and terminating in the valley of Elqui, Province of Coquimbo.

2.

**CENTRAL REGION** from the ski resort of Portillo in the Province of Aconcagua, through the coastal resorts of Valparaíso and Vina del Mar, and the streets of the capital city - Santiago - to the mountainside mining town of Sewell in the Province of O'Higgins and the countryside beyond where luscious melons and grapes are harvested and the Chilean "huasos" are showing off their horsemanship at a "rodeo".

Two pictures from the Chilean possession in the Pacific - 1,000 miles from the mainland - the mysterious Easter Island, are included in this section.

3.

**SOUTHERN REGION** from the Laja River through the wheat belt at Malleco to the lakes, rivers, waterfalls and snow-capped volcanoes of the beautiful lake district and rich cattle raising farmland of the southern provinces, to take a steamer in Puerto Montt harbour.

From here, by sea to Aysén, Chiloé Island, Patagonian sheep farms, and on through the Chilean fjords to see the formidable Towers of Paine in the Cordillera, the San Rafael glacier, the Straits of Magellan, oil prospecting in Tierra del Fuego and still further south until finally the snow white landscape of the Antarctic is reached.

IMPORTANT ANNOUNCEMENT:

## ANNUAL LUNCHEON HIS ROYAL HIGHNESS PRINCE PHILIP - GUEST OF HONOUR

**HIS EXCELLENCY** The Chilean Ambassador (President), Sir Leslie Bowes (Chairman), and members of the Executive Committee have great pleasure in announcing that the Annual Luncheon of the Anglo-Chilean Society will take place on Wednesday, 24th July, 1968 in the Great Room at Grosvenor House, Park Lane, London, W. 1.

His Royal Highness Prince Philip, Duke of Edinburgh, has graciously consented to be Guest of Honour and Speaker.

Members are invited to take particular note of the date fixed for this important occasion. Full details will be sent to all members in due course.



"Rodeo"



Drill & Mechanical Shovel at Chuquicamata

## SOCIETY ACTIVITIES IN CHILE

### CEREMONIAL PRESENTATION - SWORDS OF HONOUR

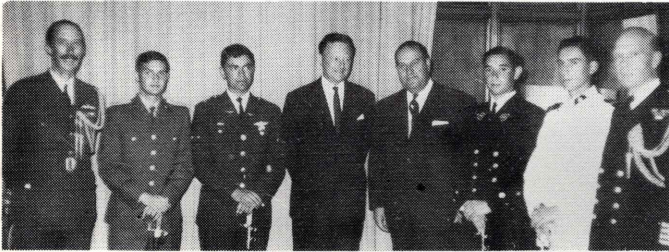
THE ANNUAL CEREMONY of presenting Swords of Honour, donated by the Anglo-Chilean Society, to the leading cadet of the graduating class of the Chilean Army, Navy, Air Force and Carabineros, was held at the Prince of Wales Country Club, Santiago, on the 19th December, 1967 in the presence of distinguished Military Authorities representing the four Armed Services mentioned, H. M. Ambassador and the Chairman of the Society in Chile, don Victor Braun Page, and many members of the Society.

The swords were presented by Her Majesty's Ambassador to Chile - Mr. F. Mason, C. M. G., assisted by the British Naval Attaché, Captain Douglas Poynter, R. N., and the Air and Army Attaché, Captain Desmond Devitt. General Sepúlveda, (Carabineros), was invited to present one of the swords to his own son, which he did with understandable pride and emotion.

The winners of the swords were as follows:-

- Army: Alférez Sub Teniente Alfredo Gmo. Román.  
Sword inscribed: "Premio O'Higgins 1967"
- Navy: Cadete Walter Berlinger Landa.  
Sword inscribed: "Premio Cochrane 1967"
- Air Force: Cadete Jaime Silva Rivera.  
Sword inscribed: "Premio Capitán Manuel Avalos Prado 1967"
- Carabineros: Sub Teniente José Alberto Sepúlveda Ross.  
Sword inscribed: "Orden y Patria 1967"

The Cocktail Party which followed the Reception and Presentation was voted a great success.

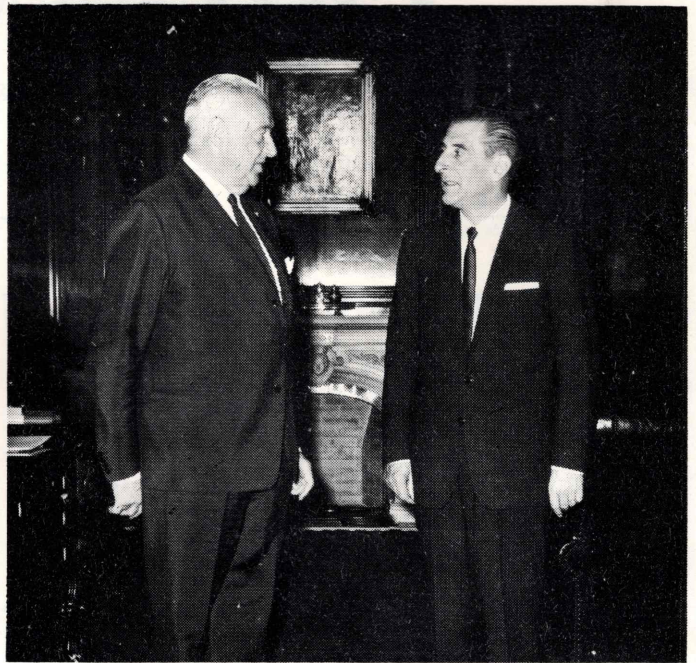


Presentation of Swords (1967) (l to r) Group Captain Desmond Devitt (Air Attache stationed in Lima Peru), Sub-Tnte Jose Alberto Sepulveda Ross (Carabineros), Cadete Jaime Silva Rivera (Air Force), H.E. Fred Mason, C.M.G., H.B.M. ambassador Victor Braun Page (Chairman, Soc. Anglo Chilena), Cadete Walter Berlinger Landa (Navy) Alferez Sub-Tnte Alfredo Guillermo Roman (Army), Captain Douglas Poynter, R.N. Naval Attache.

## NEW YEAR'S HONOURS LIST

SIR LESLIE BOWES, K. C. M. G., C. B. E. The Anglo-Chilean Society was proud and happy to learn that Her Majesty The Queen had graciously bestowed the honour of Knight of the Order of St. George upon our Chairman, Mr. H. Leslie Bowes. Sir Leslie has spent a lifetime devoted to the cultivation of closer business and cultural relations with countries in South America and we extend to him and Lady Bowes our warmest congratulations on receiving this well earned distinction.

MR. DACRE WATSON, O. B. E. The Society has also been delighted to learn that Her Majesty The Queen has graciously bestowed upon Mr. Dacre Watson, a member of our Santiago Committee, the award of Officer of the Order of the British Empire. Mr. Watson is a well known member of the resident British community in Santiago who has rendered outstanding services to the Anglican Church, our Society, and many other community efforts in Santiago, which include the recent foundation of a Cheshire Home for the sick. We offer Mr. Watson our heartiest congratulations on receiving this well deserved honour.



His Excellency The President of Chile, Señor don Eduardo Frie, receives in audience Lt. Col. L.J.W. Richardson (on left) - member of the Executive Committee of the Anglo-Chilean Society - during the latter's recent visit to Chile.

## BRITISH TRIUMPH IN THE ANDES

AFTER five gruelling weeks of preparation three British climbers were recently successful in climbing the previously unconquered "Fortress Peak" in the Patagonian Andes. Six men and a woman formed the joint British Patagonian Expedition which tackled the mountain, well over 10,000 feet high, considered the most formidable peak in South America.

The Society sent the following cable to the leader of the expedition in Chile, Mr. Ian Clough, on hearing of their great success:-

"Chairman, Executive Committee and members of Anglo-Chilean"  
"Society send greetings and warmest congratulations to all"  
"members of British Patagonian Expedition on their magnificent"  
"achievement in climbing "Fortress Peak".

Mr. Clough replied thanking us for our telegram of congratulations which he said was very much appreciated. (The names of the members of the expedition and a picture of the peak appeared in our May, 1967 issue of "Chilean News".)

## CHILEAN VISITORS

WE have been pleased to welcome to London Señor don Benjamin Subercaseaux, who recently spent a few days here seeing friends and visiting museums on anthropology. This distinguished visitor is holder of the National prize for Literature in Chile, one of her foremost writers and author of "Chile - Geographical Extravaganza", "Ocean Land" and "Jimmy Button". Incidentally, we hear that Señor Subercaseaux has been in touch with film studios in this country who wish to produce a film based on his book "Jimmy Button". This last novel is particularly interesting because it tells the history of Capt. Fitzroy in his trip to Patagonia with Charles Darwin on board. Part of the story takes place in London. Besides being a great writer, Señor Subercaseaux is also Professor of Anthropology at the University of Concepcion.

A brief example of his writing, in Spanish, will be found on Page 3, (column 1).

# INSECTOS Y PAJAROS DEL CENTRO DE CHILE

Benjamín Subercaseaux

(Del libro "Chile, o Una Loca Geografía")

NO existen aquí las inmensas mariposas azules del Brasil, pero entre las florecillas de las huertas revolotean unos como trocitos inquietos de papel, que la brisa levanta sobre el fondo purísimo del cielo y luego deja caer sobre el suelo ardiente, donde se quedan inmóviles, con las alas plegadas arriba en una oración temblorosa de finas nervuras.

Y hay las mariposas amarillas de un fresco color de limón; y las hay rojas, algo terroso y un tanto ordinario, pero que armoniza tan bien con la olla de greda, el poncho descolorido por el sol y la arcilla de nuestros campos.

Los coleopteros, esos "pololos" que interrumpen la lectura bajo la lámpara, frente a la ventana abierta a la quietud de la noche, tienen entre sus variedades algunos ejemplares de rara belleza; desde los carábidos tornasoles, esas pequeñas joyas rojo-verde de la región sureña, hasta los gruesos "pololos" verdes y pardos, cuyos élitros son brillantes y como cubiertos por un fino barniz. El ciervo volante los domina a todos con su belleza agresiva, con sus enormes cuernos y el zumbido alarmante de las grandes alas.

Serfa difícil y engorrosa la cuenta de los insectos chilenos, si tuviéramos que mencionarlos todos. Hay el gran abejorro color de miel, el Bombus chilensis, un pelotón de terciopelo encendido que vuela pesadamente de flor en flor por el bochorno sofocante del mediodía; y la abeja caupolicana, negra azabache, con el abdomen cubierto por un suave vello blanco, que recorre con afán perseverante y reposado las florecillas silvestres de los cerros.

Los pájaros diurnos sí que forman un dulce y visible concierto matinal. Las diucas grises como el alba, tienen un canto tímido, con frescura de amanecida. Los chincoles lanzan su "Tío Agustín" en la hora calurosa de la siesta. Hay también los chercanes, "amigos de la culebra", que habitan en las viejas tapias; los jilgueros verdosos, la loica de pechuga encarnada y otros pájaros cuyos nombres no recuerdo, pero que lanzan extraños gritos en el silencio de las quebradas. Son unas como carcajadas invisibles que se desgranán de los montes y van repitiendo su eco por la espesura. O bien, un llamado angustioso que sale de alguna vertiente olvidada y que, de tumbo en tumbo, recorre las laderas y los riscos hasta que otro llamado igual les responde desde el monte cercano. Y es tanto el silencio en aquel instante, que el estremecimiento de la cabalgadura para espantar algún tábano, parece profanar el conjuro misterioso que nos rodea.

En el valle hay tordos, zorzales y tencas. Son los delincuentes del pajarero. Cuentan los campesinos que estas aves roban pequeños objetos y los esconden en sus nidos. Por eso, tal vez, decimos de los pillos "que son muy zorzales", y de los ebrios "que están borrachos como tencas". Esta reputación licenciosa no les resta nada de su aspecto encantador. Corresponden al "roto" chileno entre la gente alada.

Contrastando con ellos, los picaflores sostienen valientemente su inocencia con una niebla de alas en torno y la cabecita recta, mirando al frente. Son una variedad de los oiseaux mouches, esa diminutas joyas del trópico. Sólo que no sabemos como pueden resistir en estas latitudes tan frías. Sin embargo, viven y alegran nuestros jardines con su plumaje maravilloso: tienen el dorso verde-esmeralda, irisado de luces rojas y áureas; el pecho es blanquecino, con pintas negras; los ojos muy negros también, con una pinta blanca en la comisura exterior que nos da la impresión de que están mirando hacia atrás. Sin los picaflores, pensaríamos que Dios nos había abandonado en las tonalidades del gris. Ellos son una muestra del color del mundo, en esta zona polvorienta, sin colores vivos.

## CHILE

### ECONOMIC NOTES

#### INCREASED COPPER PRODUCTION IN 1967

Copper output during 1967 reached 658,630 metric tons, compared with 636,595 metric tons the previous year, based on provisional figures. The significant increase was due to the small and medium size mining enterprises, since their production last year is estimated at 122,229 metric tons compared with 99,828 metric tons in 1966. Nevertheless, Sociedad Minera El Teniente, jointly owned by the Chilean Government Copper Corporation and Kennecott Copper Corporation had a production estimated at 203,584 metric tons, the largest in this mine's history. Foreign exchange revenues, from copper sales, increased from about \$348 million in 1966 to around \$400 million last year, according to provisional estimates.

#### CENTRE FOR SHIPBUILDING TO COVER LATIN AMERICA

The shipbuilding centre that functions under the auspices of the Valdivia campus of the State Technical University, will become a training establishment for all of Latin America, instead of only Chile, thanks to an agreement recently completed with UNESCO. The river city of Valdivia, has long been identified with shipbuilding and now that its main fluvial artery to the sea is navigable by large vessels, it can have added facilities for this potentially important industry for all of Latin America. Initially, shipbuilding will be basically for small vessels suitable for the fishing industry and others. All training will be under the responsibility of the Valdivia Technical University. An historical fact is that during the famous California gold rush period, large and sturdy Chilean made barges, called "lanchas maulinas", used to travel all the way up the Pacific Coast of this Hemisphere to reach the mining area in the West Coast of the United States.

#### EXPORT QUALITY CONTROL

The Central Bank of Chile has entered into an agreement with the National Institute for Technological Investigations and Standards (INDITECNOR) to have this organization establish standards, norms and quality controls on Chile's consumer export products. The Chilean Government, as well as the Central Bank, have been interested in having the country's export products on the highest possible level of quality. The President of the Central Bank said that he hoped that the private exporting sector of the country properly organized, would eventually be responsible for carrying on INDITECNOR's recommendations. Chile's aim was, besides exporting high quality products, that they leave the country within a well established and clearly defined classification as well as packing style. Wines, fresh and canned fruits and other products are traditional exports from Chile to the United States, Europe and to some Latin American countries. More recently some sea food products have been test marketed abroad. 65% of all deciduous fruits that enter the United States are of Chilean origin. INDITECNOR will prepare regulations covering eventually 55 export products, but will start with a selection of 20. Chile's industrial exports, excluding copper manufactured products and fishmeal, have increased from \$27.5 million in 1964 to \$57.6 in 1967.

#### FISHMEAL INDUSTRY IN 1967

The Chilean Institute for the Development of Fishing Industries reports that during 1967, 664,700 metric tons of sardines were caught. This represents 63 per cent of the 1,047,700 metric tons caught the previous year. An average of seventeen fishmeal plants were in operation during 1967, against twenty-four in 1966 and twenty in 1965. Total fish oil production in 1967 was 9,900 metric tons, compared with 18,700 metric tons in 1966 and 7,200 metric tons in 1965. As reflected in these figures, the rapid growth of the Chilean fishmeal industry has been subject to economic problems caused by the vagaries of sardine habits. Also, in the area between Caleta Manta and la Salada, fishing conditions were hindered by the tendency of the sardines to disperse widely and stay too close to the coast. Corfo is trying to diversify the industry so that it will be strong enough to withstand fluctuations in the supply of raw materials for fishmeal.

## RECENT WEDDINGS

### SANTA-CRUZ - GUZMAN ERRAZURIZ

The wedding of Señor don Victor Santa Cruz Sutil, elder son of His Excellency The Chilean Ambassador to the Court of St. James, and Madam Santa Cruz to Señorita Rosario Guzman Errazuriz was solemnised at the beautiful church in Santiago, la Parroquia de Nuestra Señora de la Divina Providencia in Avenida Providencia on Friday, 15th December, 1967. This ceremony and the Reception which followed was one of the outstanding social events of the month in the capital city.

### GALLAGHER - MOSCOSO PLAZA

There was a large congregation present at St. Mary's Church, Cadogan Street, S.W.1. on Saturday, 8th December, 1967, for the wedding of Mr. David P. Gallagher, son of Mr. & Mrs. J. V. Gallagher, 15 Eaton Square, London S.W.1. to Miss Alegria Moscoso Plaza, daughter of Mr. Alfonso Moscoso and Mrs. Gloria Plaza of Quito, Ecuador. Following the church ceremony a Reception was held at 30 Pavilion Road, Hans Crescent, S.W.1. A picture of the bride and bridegroom appears on this page.

### HUTCHISON - STONE

The wedding of Mr. Peter Thomas Hutchison, son of Mr. & Mrs. T. N. Hutchison, 20 Cheviot Close, Yardley Park, Tonbridge, Kent, to Rita Mary, daughter of Mr. R. W. Stone, Ranslett House, Eaton Constantine, Shrewsbury, took place at Christ Church, Cressage, Shropshire on Saturday, 24th February, 1968. The Reception which followed was held at The Old Hall, Cressage.

THE ANGLO-CHILEAN SOCIETY EXTEND WARMEST CONGRATULATIONS TO THESE YOUNG COUPLES AND WISH THEM EVERY HAPPINESS FOR THE FUTURE.



Mr. & Mrs. David P. Gallagher after the Church ceremony.

## FORTHCOMING EVENTS IN LONDON

RECEPTION AT FESTIVAL HALL. The Committee have much pleasure in advising members of the Society that arrangements have been made to hold a Reception in the Ceremonial Foyer at the Festival Hall, London, S.E.1. on Tuesday, 9th April, 1968, (Cocktails 6.15 p.m. to 8.15 p.m.) Tickets 25/- each for members and their friends may be obtained from the Secretary, 3, Hamilton Place, W.1. This Reception has been arranged to coincide with the Exhibition of Photographs - "Image of Chile" - sponsored by the Chilean Ambassador, which will be officially opened in the Festival Hall a few days earlier. Notices of this event have been sent to all members.

## PRELIMINARY ANNOUNCEMENT

CHILEAN DELICACIES AND ARTS AND CRAFTS. Madam Jara, wife of the Minister Counsellor of the Chilean Embassy, and other ladies of the Embassy will have a Chilean Stall at a Charity Bazaar to be held in the Chelsea Town Hall on 28th May next in aid of Social Services of Great Britain International, which has the support of most of the foreign Embassies in London.

It is hoped to have on sale various Chilean delicacies - including cholgas, erizos, centollas etc. and Chilean wines, also arts and crafts from Chile and Easter Island.

Members of the Society in the London area should note this date. Further details will be sent to members in due course.

LATIN AMERICAN SOCIETIES ANNUAL GOLF COMPETITION. The Committee wish to advise members that the Latin American Societies Annual Golf Meeting has been fixed to take place this year at the New Zealand Golf Club, Woodham Lane, Weybridge, Surrey, on Wednesday, 26th June 1968.

This competition for the "Ambassadors' Cup" usually takes the form of 18 holes Stableford Bogey. The Cup is retained for one year by the Society whose member wins it, and the winning player also receives a personal prize. Corporate members may nominate any one member of their firm to play for each Society of which the firm is a member.

Members of the Anglo-Chilean Society, including ladies, who have not previously participated in this annual event and who would like to play this year are invited to send in their names to the Secretary, 3, Hamilton Place, London W.1.



Chilean farm hand in wine growing region of Chile.

## NEW MEMBERS

We are pleased to announce that the undermentioned have been elected as New Members of the Society:-

D. G. Mitchell	Annual	London
Miss Mary Darley	"	"
C. L. Turner	"	"
Mr. & Mrs. Robert Perez	Joint Membership	"
P. M. F. Walker	Annual	"
Mrs. Mabel B. Oxley	"	"
Sir James & Lady Currie	Joint Membership	"